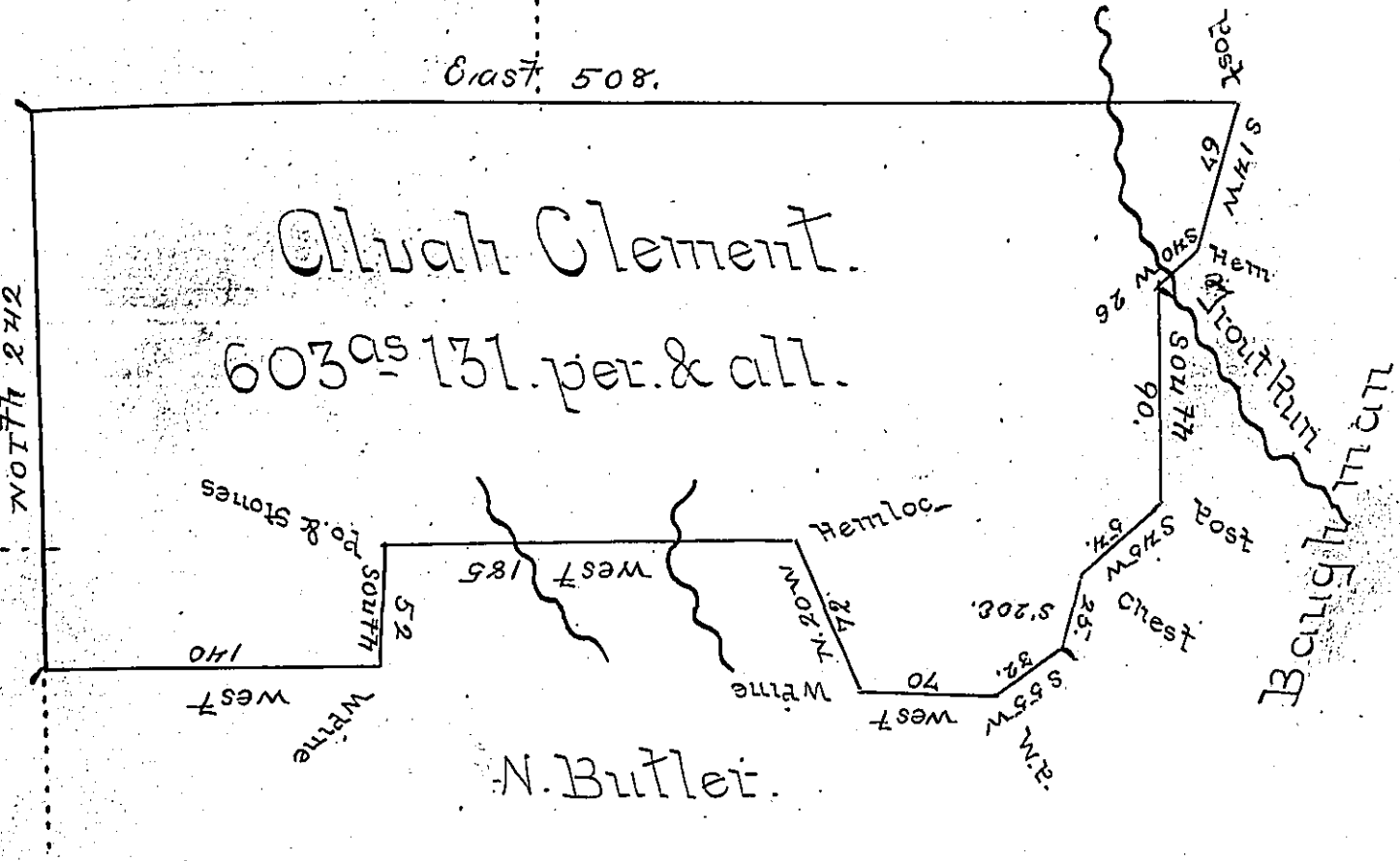


B. Williams

East 508.

Sam. Willis
No 4161.

Sam. Willis
No 4120.



Situated in Lidy Township Clinton County, surveyed the 27 day of November 1852 to Alvah Clement by virtue of his Warrant for 984 1/4 as Bearing date the 13. day of September 1852 Containing 603 as 131 per. & all. of six per cent for Roads &c.

Wm J. Baird Co. Sur.

To John Rowe Esq. }
 Sur Gen of Penna. }

IN TESTIMONY that the above is a copy of the original remaining on file in the Department of Internal Affairs of Pennsylvania, made conformably to an Act of Assembly approved the 16th day of February, 1833, I have hereunto set my Hand and caused the Seal of said Department to be affixed at Harrisburg, this third day of April 1900.

James W. Latta
 Secretary of Internal Affairs.